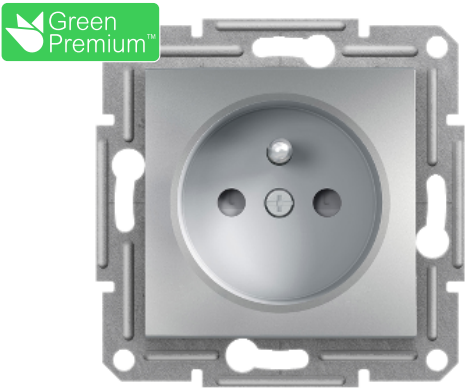


Product data sheet

Specifications



Asfora -single socket outlet with pin earth with shutters, wo frame, aluminium

EPH2800261

Main

Range	Asfora
Product or component type	Socket-outlet
Outlet standard description	Pin earth
Outlet poles configuration	2P + E with shutters
Device presentation	Mechanism with fixing frame
Socket additional information	Shuttered
Colour tint	Aluminium
Type of packing	Flow-pack

Complementary

Socket number	1
Device mounting	Flush
Power range	3680 W
Rated current	16 A at 250 V AC
Connections - terminals	Lift terminals
Number of cables	2 cable(s) 2.5 mm²
Cable stiffness	Flexible Rigid Solid stranded
Wire stripping length	13.0 mm
Material	ABS + PC: central plate
Surface finish	Painted
Conductor material	Copper
Fixing mode	Screws or claws51...69 mm
Height	71 mm
Width	71 mm
Depth	42 mm
Projecting depth	10 mm
Quantity per set	1
Net weight	0.069 kg

Environment

Standards	IEC 60884-1
Product certifications	SEP-BBJ TSE
IP degree of protection	IP20

Packing Units

Unit Type of Package 1	PCE
Number of Units in Package 1	1
Package 1 Weight	69.0 g
Package 1 Height	7.1 cm
Package 1 width	7.1 cm
Package 1 Length	4.2 cm
Unit Type of Package 2	BB1
Number of Units in Package 2	10
Package 2 Weight	930.0 g
Package 2 Height	9.4 cm
Package 2 width	18.5 cm
Package 2 Length	27.5 cm
Unit Type of Package 3	S04
Number of Units in Package 3	120
Package 3 Weight	12.312 kg
Package 3 Height	30 cm
Package 3 width	40 cm
Package 3 Length	60 cm

Offer Sustainability

Sustainable offer status	Green Premium product
REACH Regulation	REACH Declaration
EU RoHS Directive	Compliant EU RoHS Declaration
Mercury free	Yes
RoHS exemption information	Yes
China RoHS Regulation	China RoHS declaration Product out of China RoHS scope. Substance declaration for your information
Environmental Disclosure	Product Environmental Profile
WEEE	The product must be disposed on European Union markets following specific waste collection and never end up in rubbish bins